

THE VILLAGE NEWSLETTER



PUBLISHED FOR THE HORTON AND LITTLE SODBURY VILLAGE HALL COMMITTEE

May 2013

Deadline for articles for the next edition 30th June 2013

DATES FOR YOUR DIARY

7 th May	WI mtg – Talk on Practical Origami
16 th May	LHG visit to Chavenage House ffi –Barbera Denton
21 st May	WI walk – North Wraxall
2 nd Jun	Afternoon teas at Village Hall - 3pm onwards *
2 nd Jun	Hawkdean Hike *
18 th Jun	WI walk – Duchess Park
4 th Jul	Strawberries & cream tea at Horton Village School *
7 th Jul	Afternoon teas at Village Hall - 3pm onwards *
27 th Jul	BBQ@Village Hall – 8pm*
4 th Aug	Afternoon teas at Village Hall - 3pm onwards *
18 th Aug	Sodbury Sportive *
31 st Aug	Walk TEN at Badminton Estate *
1 st Sep	Afternoon teas at Village Hall – 3pm onwards *

* More information elsewhere in Newsletter

(LHG=Local History Group)

Note: See the Village Hall web site www.halsvh.org.uk for a full list of future events.

SUMMER SUNDAY TEAS

After the success of the teas served on Mothering Sunday and at the Easter Egg-stravaganza, several people commented that they'd like to enjoy some more afternoon teas at the village hall.

So, on Sunday 2 June, 7 July, 4 August and 1 September, we'll be serving afternoon tea at the hall from 3pm. Come and enjoy a cuppa and some home- made cake and scones. More details to follow.

Katharine Barnes

HORTON CAMP IRON AGE HILLFORT

From November 2012 until March 2013, members of the Yate and District Archaeology Group (YaDAG), as part of the South Gloucestershire Community Archaeology Research Project (SCARP), undertook a geophysical and earthwork survey of Horton Camp Hillfort.

The hillfort lies on high ground above the village, commanding splendid views across to Wales and forms one of a series of similar hillforts along the Cotswold ridge. These hillforts are normally comprised of a large earthen bank (perhaps including stone in the makeup) and a large ditch on the outside. Often there is more than one circuit of these bank and ditch systems, as there are, for example, at Sodbury hillfort. Horton Camp is comprised of a large earthen bank (also called a rampart), surviving to about 3m in height, but without an external ditch (which should be there).



Surveying In Progress

Most of these hillforts would have been built in the Iron Age, c.400 BC, (although some have Bronze Age origins, c.1000 BC), but what they aimed to do is not entirely clear. The term fort implies a military function, but this may not have been their sole function (or their function at all) and they may instead have been temporary residence or even redistribution centres, collecting grain and other products from their hinterland and sending it out to the wider environment. There has been only sparse archaeological investigation of these hillforts in the Cotswolds of South Gloucestershire and so after obtaining permission from the National Trust (who own the land) and a licence from English Heritage (it is a Scheduled Monument), YaDAG set out to discover more about the monument that is Horton Camp.

The survey work mainly comprised a geophysical survey involving resistance (where an electrical current is sent into the earth and the resistance it encounters measured) and gradiometry (which measures disturbances in the earth's magnetic field created by human activity) in order to see beneath the surface without having to excavate.

THANKFUL VILLAGES RUN

Little Sodbury is a "Thankful Village" – that is one where everyone who went off to fight in the First World War came home again. This summer, a group of Welsh motorcyclists (from another Thankful Village) are visiting all 51 Thankful Villages in England and Wales over a period of 9 days. They're doing this to raise money for the Royal British Legion and similar charities. They hope to raise £51,000. The Villages are spread all over the country, from way up north down to Cornwall.

The bikers are staying overnight in Little Sodbury on 27 July. To welcome them, we're holding a BBQ at the village hall. Please join us to support their cause. Further details to follow. There will be film crew following the Run so you might get on TV!

Further details about the Thankful Villages Run can be obtained via <http://thankfulvillagesrun.com/>

Katharine Barnes

LETTERS TO THE EDITOR

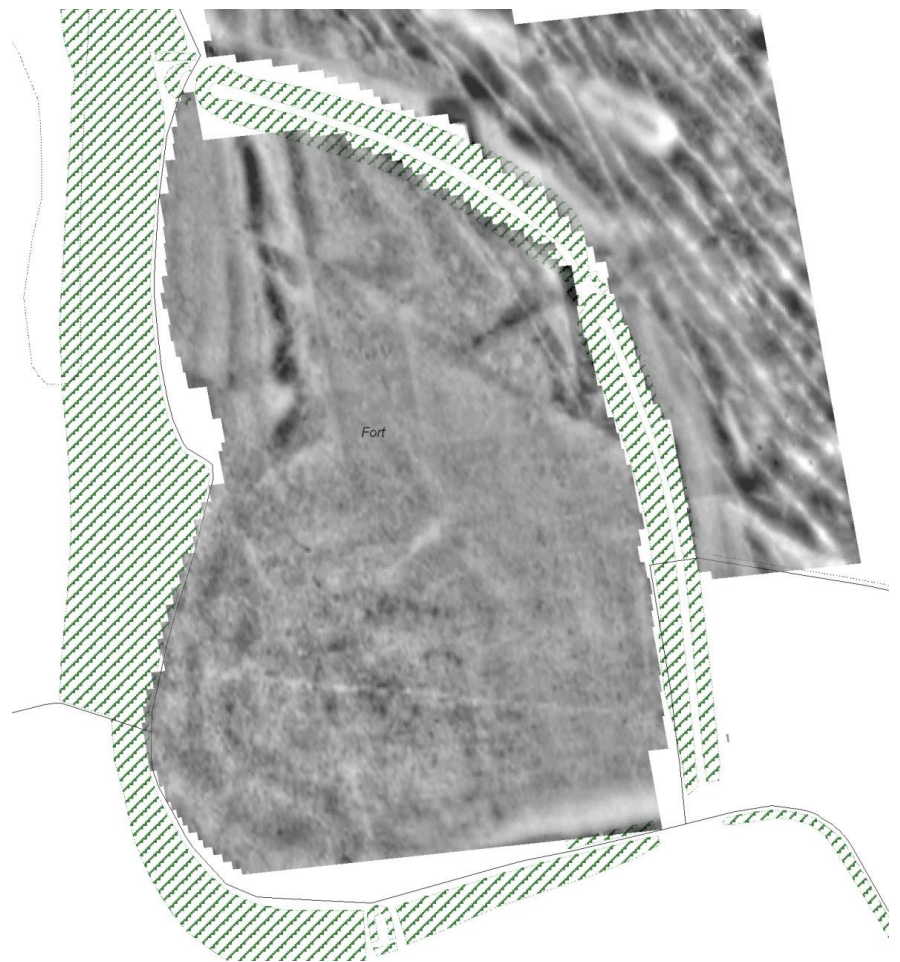
The Village Hall

Over the many years I have lived in Horton, there have been numerous improvements to the Village Hall. My first recollections were of a dilapidated wooden hut, not a very enticing venue to say the least.

Thanks to the efforts of many people, some unfortunately no longer with us, the Hall has developed into a real multi-purpose venue which accommodates so many activities- dog training, play group, harvest suppers, New Year's Eve parties, pantomimes, barn dances, Royal Occasions, casino evenings....I could go on!

The recent improvements to the kitchen and the lighting reflect the continual improvement of the hall. In the future, I understand there are plans to make a play area for children and to upgrade the old part of the kitchen. I am sure there are other worthy ideas as well.

In order that these future ideas come to fruition, it seems to me as



Geophysical Mapping of Horton Camp

The results have shown that the inside of the hillfort was not used for intensive occupation. There is little evidence for hut circles or granaries, although some enclosures were identified. This is fairly typical of these hillforts, which appear to have been little used by people and certainly not for any great length of time, suggesting maybe seasonal or temporary occupation. However, outside the hillfort we discovered a number of important features. Firstly, the team identified the external ditch showing that in the Iron Age, Horton Camp was made up of the bank you can see today, but also a large external ditch.

We also found two oblong shaped anomalies (the words *features* and *anomalies* are fairly common archaeological technical terms) that appear to parallel the direction of the earthen bank. It is segmented rather than joined and our current thinking is that it could be part of another circuit of ramparts and ditches, this time being causewayed. Segmented ditches around hillforts are fairly well known and therefore this is not out of the ordinary, but it is a feature previously not identified and adds to the history of Horton Camp.

In summary, we have a monument built in the Iron Age but not used on a regular basis (or not enough to leave a trace for geophysics). Why this happened is a mystery for it certainly took a large number of people to build and if they did live inside it appears it was only in temporary residences. Whether people fled to this fort in times of duress or whether it was simply a place that people gathered on occasion to exchange goods or meet other people we are not sure. Perhaps a project, focussed on a number of the hillforts in South Gloucestershire collectively will give us more information on these enigmatic monuments.

Paul Driscoll on behalf of YaDAG and SCARP © SCARP
Archaeology & Historic Environment Record Officer, SGC

important as ever to support as many events as you can, it may not always be a fundraiser for your pet project but the more people who attend functions in the hall, the more a variety of improvements and additions can be implemented, eventually to suit everyone.

A good time is pretty well guaranteed with hall events so I do hope people will come along, meet your neighbours and keep the hall developing as a viable focus for everyone in the village.

Bert Gough

Farewell to our Editor

This edition of the Newsletter is the last one to be edited by Richard Winsborrow, who kindly agreed to take on the task nearly 5 years ago. The Village Hall Committee would like to express our heartfelt thanks to Richard for the excellent job he has done in that time. The newsletter is always a very good read, interesting, well put together and punctual. Richard - we'll miss you! We hope you enjoy your increased leisure time and that the weather improves so you can get outside and walk without getting soaked to the skin. We'll keep our fingers crossed for a sunny summer.

Katharine Barnes

LOCAL WI ACTIVITIES

Our regular monthly meetings take place at 7.30pm at Hawkesbury Village Hall - however we do a lot more besides this! We have a walking group and a book group each of which meets monthly; also we often have craft workshops and there are outings to the cinema most months.

Visitors are always welcome so if you would like to find out more do come along. For more information contact Lynn Edwards on 07973 166692 or view the website for the local group www.hawkesburyandhortonwi.org.uk.

Lynn Edwards

HORTON PRIMARY SCHOOL

Since Easter, time has flown by already and we are getting stuck in to our study foci for this term. As mentioned in the last Village Newsletter, our focus for this term is "Looking After the Environment": the children have already begun investigating this in detail.

In the Infants they have been thinking about the local environment around the village and have noticed that there is some litter around. They are coming up with a plan to clear the litter and you may see them out and about doing this. Whilst they were surveying the environment they noticed that there was dog mess on the paths that go down the hill - they asked me to mention this in this newsletter to remind us all to always clear up after our dogs - watch out for their posters around the village too.

The children in Y3/4 have been investigating wind and water power (they even dramatised how these work) and are currently making their own versions of dams and wind turbines (on a much smaller scale than in reality of course!)

In Year 5/6 they are looking at the global impacts of environmental issues and are currently focusing on the impact of global warming on communities in terms of flooding and drought. (If any villagers have any experience of working with communities affected by these things Mrs Armstrong would love to hear from you.)



Infants Football Team

We have had many applications for places for children to start in September and it looks like there will be a Reception class of 10 children, which would bring our total numbers to 67 children on the roll. These numbers included families new to the school, as well as some siblings, and we're looking forward to welcoming them to our school community. I feel it is a testament to the staff, children and parents who are already here and to the village community feeling that so many people value the education we offer here. The feedback we have had from those who have chosen to come here is that there is a special feeling in the school that they find it hard to describe but feels caring and inclusive; that they value the nurturing environment of the small school but equally value the way we ensure that the children gain wider world experiences through visits, study and collaborative projects with other local schools - their feedback has been lovely to hear.

CHURCH NEWS

Church services at Horton were well-supported over the Easter period with 40+ attendees at both the Good Friday and Easter Sunday services.

Services take place as usual at Horton Church and Little Sodbury Church during May and June at 11.15 am and 6pm respectively.

Tina Hildick-Smith

HORTON WALKING FESTIVAL

The programme for this event, which runs from 26th – 29th September is getting larger! An Owl Prowl will have been added to the line up. The Owl Prowl will be the first event of the 2013 Walking Festival, taking place on Thursday 26th September starting at 7pm and will take place in Lower Woods. Owl conservationist Ian McGuire of Wild Owls will lead the prowl. Find out more about Ian and his owl prowls on his website <http://www.wildowl.co.uk>. Tickets which **must be booked in advance** cost £6 adults, £3 children £15 family of 2 adults and 2 children are available from boxoffice@halsvh.org.uk. Numbers limited. To keep in touch with events as they unfold go to the Walking Festival's dedicated webpage <http://tinyurl.com/a9rmsqx>

WALK TEN - BADMINTON

There are 17 Walk Tens taking place in various locations throughout the UK this summer. We are pleased that the Badminton Estate is our South West location for 2013. The event starts at 7pm and is a sponsored 10km twilight walk through the deer park and woodland of the Badminton estate as the sun begins to set. Following the walk as the stars light up the night, you will be invited to settle down to your home-made picnic by the Worcester Lodge or enjoy the food on offer from local caterers as live music and entertainment play on, culminating in a fireworks display at 10pm, to mark the time when Marie Curie nurses begin their night shift, caring for patients with a terminal illness in South Gloucestershire and the surrounding area.

We have a promotion so that anyone who registers before June 30th will be included in a prize draw to win their picnic on the night, courtesy of Papadeli and The Organic Hamper Company

Our children have been out and about getting involved in many different sports recently and there are yet more events on the horizon. The Infants took part in a local football festival and developed excellent team skills and sportsmanship. On the field next to the Village Hall our tag rugby players had a successful match against Slimbridge Primary, which they won with a score of 7 -3. We hosted a netball match at school (not easy given our sloping pitch) and found we needed more practice against teams from larger primary schools – we played St Marys and, although the team tried hard, we lost 7-0; the only way is up as they say!

Our Y3/4 children have been out to a Handball festival which was enjoyed by everyone and taught them some new skills. Coming up we have cross-country, dance, more netball, more football and we're looking to develop orienteering at the school. If you have any skills in these areas and would be happy to get involved then let us know.

I'd like to finish this news update with an invitation to everyone in the Village to a Strawberry Tea on Thursday 4th July at school at 2:00 – 3:30pm. We'll be holding the finals of our talent show that day and, weather permitting, we'll be having a strawberry and cream tea. Why not come along and enjoy the sunshine, delicious food and share the talents of the children of Horton CE VA Primary School? Please contact Lesley Leahey on Lesley.leahey@hortonprimary.org.uk or call 01454318834 to let us know you are coming.

Jane Yeo

A GLIMPSE INTO OUR PARISH HISTORY

Our Local History Group has unearthed an interesting set of documents from the 17th century. They are a collection of Horton Glebe terriers i.e. lists of lands and property belonging to the Parish Church.

The following document is an example of what is in the collection. It is a "Horton Terrier" dated 15th November 1683. It has been extracted from the Registry of the Lord Bishop of Gloucester.

*Horton
Dioc Glou'* *Concerning ye Order and Direction for the Execution
of the Order requiring an Account of such things as
have been and are in o' Parish given for Charitable.*

Now These Testify:

*That wee know not nor ever heard
of any Person that ever gave any thing, unless what
hath been to be and presently was bestowed according
as the Dono's appointed, but we have in o' Parish Church
Five Bells wch formerly where but fower but the great one
being broken and was cast, of it then was made,
An^o Dom^o 1651, the new Tenor and Trible. And belonging
to o' Church wee have One Acre of Land in the
Castle Field, One Acre and a half of land in the In
Fielde, and an antient Pay called Cowe hire (but wee know
not the reason for we have no kine belonging to o' Church) and
payed now
by Thomas Came and Jane Woolworth, Wid. six pence
a piece. Besides, we have One Pulpit with a fair cloth
and cushion, one Communion table cloth, one Sarge Carpet
with Fringe, one Silver Cup with its cover, one table
Napkin, one Pewter bottle (wch wee intend to change), one
Saucer, One Surplice, one Large Bible, two Com[m]on Prayer
bookes, one book of Homilyes By Jewell and Harding,
One Beire with its cover, one Font with its cover, One Parchm[en]t
Reg^d booke, one booke to keep o' accounts, and Two Chests,
all bought wee beleive by ye Parishioners as occations
required. Witness o' hand this fifteenth day of November.*

You can watch a video about Walk Ten and get a real feel for the event by clicking on the following link www.mariecurie.org.uk/walkten and of course if you would like to sign up and take part yourself (and possibly win a picnic hamper) you can either register online at www.mariecurie.org.uk/badminton or by calling **0845 052 4184**. Under 16's walk for FREE and dogs are welcome too!

NEWSLETTER DISTRIBUTION

This newsletter is distributed by email. The newsletter is also available on the Village Hall website. To be sure of getting future issues please forward your email address to the Newsletter Editor.

CONTACTS

Contact details for members of the Village Hall Committee are available on the website halsvh.org.uk.

For Village Hall bookings contact Emma Cordy-Rugman on 322879 or via the email address given on the website.

NEWSLETTER ITEMS

Contributions to the newsletter are welcome. The Editor reserves the right to edit contributions.

As you may already know I am stepping down as Editor with the completion of this issue of the newsletter. I would like to thank you for your support over the last few years. Katherine Standerwick has volunteered to take up the role; she will undoubtedly bring a fresh perspective to the task ahead. Please support her as unstintingly as you have me.

As before items for inclusion in the newsletter should be sent to: newsletter@halsvh.org.uk.

Richard Winsborrow

Note: Unless explicitly indicated the contents of the newsletter do not necessarily represent the views of the Village Hall Committee, the Editor of the Village Newsletter or anyone else associated with its production

The document was signed by the Rector (Thos Gwynn) and two churchwardens, Thomas Butler and Roger Morley (who used his "mark").

It appears to be an example of an inventory that was produced for the Diocese from time to time. In the document the spelling is a little strange. For instance "Dono's" would be rendered "Donors" today. As regards the reference to "Homilies" the Protestant churches had to equip themselves with 'Books of Homilies' - appropriate Protestant writings which could/should be read out in church. Bishop John Jewell (1522-1571), Bishop of Salisbury, wrote several works against the Catholic religion; these were countered by a Jesuit priest called Harding. Therefore I imagine that 'Jewell and Harding' was a collection of their controversial writings. The reference to "Castle Field" refers to an arable "Open Field" probably close to the hill fort and certainly up on the plateau.

Keen bell ringers amongst our readers will notice that the document has things to say about the state of the bells at that time!

FUTURE EVENTS



SODBURY SPORTIVE
30 • 60 • 100 MILES

18TH AUGUST
STARTING FROM CHIPPING SODBURY RFC

SUPERB ROUTES • CHALLENGING CLIMBS AND FLOWING DESCENTS
EXCELLENT FOOD STOPS • MECHANICAL BACKUP • FREE HOT FOOD AT FINISH
ALL PROFITS DONATED TO CHARITY • 2012 RAISED £6404

WWW.SODBURYSPORTIVE.CO.UK

Hawkdean Hike

Sunday June 2nd 2013

Distances 6.5km, 7km, 10km, 20km, 30km, 40km.

Hawkdean refers to Hawkesbury Deanery where the walk is located, (the deanery is part of Gloucester Diocese whose boundary extends beyond these walks). The routes combine parts from other well known walks, dependent on which route is taken. All the walks have their own appeal, however the longer routes cover some of the best scenery in Britain. The routes were chosen for their safety, scenery, interest and varied terrain. All routes start from Rangeworthy recreation ground. For more information go to the web site <http://www.hawkdean.co.uk>.