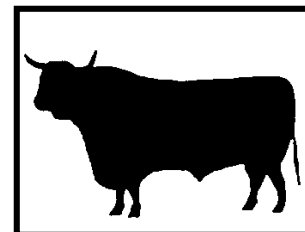


HORTON AND LITTLE SODBURY VILLAGE NEWSLETTER

Edited by Horton and Little Sodbury Village Hall Committee
Further information of events and news on www.halsvh.org.uk



August 2023

Please send items for next newsletter by 22nd September 2023 to newsletter@halsvh.org.uk

Editorial

Ok, so I really don't get this weather. Since the last newsletter, we have had the hottest June on record, and yet July feels like October. Oh well. Now, if anyone fancies being the "guest editor" for this bi-monthly newsletter, then please e-mail us on newsletter@halsvh.org.uk

Also, please note that we have "two versions" of the newsletter - the abridged version readable in the e-mail, and a fuller version in the attached PDF. They are different, so please open up the PDF to read the full story ... and see some pictures & quizzes !! Oh ... you are here already – thank you ☺

Now – there is a lot happening over the next few weeks – please check out all the dates and the events, and hope to see you there.

And lastly, if you have anything you would like included in the next newsletter ... from the school, from the church, from the Social Club, from local organisations and clubs, from anything happening in the village, then please let us know by 22nd September – e-mails sent to newsletter@halsvh.org.uk

Thank you.

Dates for the Diary

Here is a list of what will be happening in and around Horton & Little Sodbury in the next few months

Teas at St James' Church, Horton	started Sat 1 st July	- see below for details
Teas at Hawkesbury Upton Community Library	4 th & 18 th Aug	- see below for details
Horton Beer Fest	18 th to 20 th Aug	- see below for details
Container Clear Out party	Mon 28 th Aug	- see below for details
GreenMatthews' Witty Ditties	Fri 8 th Sep	- see below for details
British Cycling Tour of Britain	Sat 9 th Sep	- see below for details
MacMillan Coffee Morning	Sat 23 rd Sep	- see below for details
HorseHeard "Coast-to-Coast ride" talk	Fri 29 th Sep	- see below for details
Cheese & Wine quiz evening	Fri 20 th Oct	- details to follow

Boxercise classes are every Monday and Wednesday evenings from 6.30- 7.30pm at Village Hall.

– no need to book ahead

Pilates classes – please contact Sue Webb on sue@coreandmore.co.uk for more information.

Did you know ...

Australia is wider than the moon.

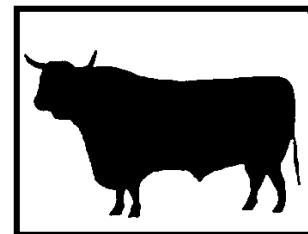
Switzerland prohibits the ownership of just one guinea pig.

When the moon is directly overhead, you will weigh slightly less.

All genuine facts – honest !! Just google them if you don't believe me !! (other search engines are available)
Explanations given at end of newsletter.

HORTON AND LITTLE SODBURY VILLAGE NEWSLETTER

Edited by Horton and Little Sodbury Village Hall Committee
Further information of events and news on www.halsvh.org.uk



Dates for the Diary in detail

Teas & Coffees

4th & 18th Aug. @ Hawkesbury Upton Community Library

A set of dates for your diary.

Jenny Harris writes :

Hawkesbury Upton Community Library is open on Friday 4th and 18th August from 2.30pm. There will be tea and cakes for sale, and children's crafts. All welcome.

Beer Festival

Fri 18th to Sun 20th August @ Horton Social Club

Now this IS a set of dates for your diary.



Yes, it's that time of year again. The annual Horton Beer Festival will be flowing from Friday 18th to Sunday 20th August at the Horton Social Club.

There will be real ale, ciders and live music.

More details available at the Social Club.

(Ed - Hum ... I'm giving up drinking beer for a month.

Sorry, bad punctuation. I meant ... I'm giving up. Drinking beer for a month!)

Container Clear Out party

Mon 28th August @ Horton Village Hall

Another date for your diary.

Ok, so there are two things happening here.

1. We are having a Bank Holiday Party at the Village Hall, starting at 2pm on Monday 28th August. Teas and coffees will be served, and the bar will be open. There may even be some hot dogs and some cake for sale. Everyone welcome ... because ...
2. At the same time, we are going to be clearing out the container that's at the back of the pavilion at the village hall. It contains a plethora of stuff ... and you can come over and help yourselves to what's there (although a small donation would be appreciated) – see list at end of newsletter for what's still available. Anything that is not required (and is burnable) will go onto an impromptu bonfire.

Please make every effort to come – even if it is just for the chat and a catch-up. It will be great to see you there.

GreenMatthews present Witty Ditties

Friday 8th Sept @ Horton Village Hall

Another date for your diary.

Chris Green and Sophie Matthews are returning to Horton on Friday 8th September.

Doors open at 7pm, with concert starting at 7:30 ... and yes, the bar will be open !!

Tickets are £15 (+ booking charge) and are available via <https://hortonwittyditties.eventbrite.co.uk>

Book your tickets now to secure your seat – it's likely to be a sell out !! Hope to see you there.

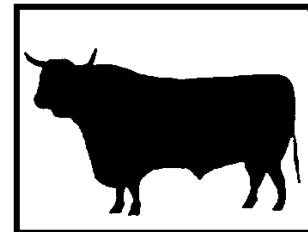
They are modern-day balladeers, specialising in story telling through song.

Following on from their acclaimed show "A Brief History of Music", GreenMatthews have a new show which explores our rich history of witty wordplay and melodic mirth.

Chris Green (piano, guitar, accordion) and Sophie Matthews (early woodwinds, flute, saxophone) summarise 4 centuries of chromatic comedy, ranging from bawdy Restoration ballads to stinging Sixties satire. Featuring songs by Noël Coward, Tom Lehrer, Flanders and Swann and a host of other lesser-known songwriters, this fun and fast-moving revue will have you rolling in the aisles!



HORTON AND LITTLE SODBURY VILLAGE NEWSLETTER



Edited by Horton and Little Sodbury Village Hall Committee
Further information of events and news on www.halsvh.org.uk

British Cycling Tour of Britain

Sat. 9th Sept @ Horton and beyond

A date for your diary.

Stage 7 of the British Cycling Tour of Britain will be on Saturday 9th September, starting at Tewksbury and finishing at Gloucester.

The official website (<https://www.tourofbritain.co.uk/stages/stage-seven/>) shows the route coming through Horton, then off through Chipping Sodbury, Yate, Nibley then Wotton-under-Edge before heading to Gloucester. But won't it be exciting to see all those cyclists riding down Horton Hill ?

Check out the web site for more news and timings of what's happening on the day.



Macmillan Coffee Morning

Sat. 23rd Sept @ Horton Village Hall

A date for your diary.



Mags Bond writes:

This year, the Macmillan Coffee Morning will be held on Saturday 23rd September at the Horton Village Hall from 10am - 2pm.

Please come along for coffee and cake; a go on the tombola and raffle and enjoy some great conversation and catching up time! Can't wait to see you all for a catch-up myself! If anyone has any raffle prizes or tombola prizes they would like to donate, or would like to make a cake, please contact me on 07967143594 and I can collect! See you there!

The HorseHeard Coast to Coast Trail

Fri 29th Sept. @ Horton Village Hall

A date for your diary.

Many of you generously sponsored Alison Barlow in 2016 when she rode from Coast to Coast across Britain on horseback. She will be talking about the challenges and experiences the trip presented on Friday 29th September at Horton Village Hall at 7:30pm. All welcome – tickets free, with donations shared between HorseHeard and Village Hall.

(Ed – from talking all evening, will Alison end up a little horse ??)



Cheese & Wine Quiz Evening

Friday 20th Oct. @ Horton Village Hall

A revised date for your diary.



The Cheese & Wine Quiz Evening at Horton Village Hall has now been scheduled for Friday 20th October. More details will be made available nearer the time.

(Ed – to misquote John Travolta and Olivia Newton John ... "You're the wine that I want".)

(Ed – to misquote Doris Day ... "Que Syrah Syrah !".)

(Ed – I'll stop now !!)

What else has happened

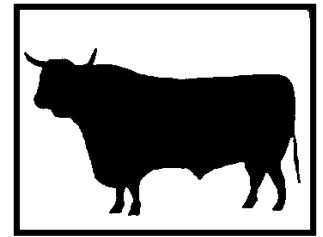
The Horton Hoe Down -

Tess Bateman writes :

We were thrilled to welcome many local faces to our barn dance in June. We were able to raise £1010 for our small school! Thank you for supporting the event so enthusiastically.

FOHS

HORTON AND LITTLE SODBURY VILLAGE NEWSLETTER



Edited by Horton and Little Sodbury Village Hall Committee
Further information of events and news on www.halsvh.org.uk

Wild About Churchyards: Horton Meadow Survey

Daisy Finniear writes :



Churchyards are hidden gems when it comes to wildlife. The grounds are often hundreds of years old and are host to all sorts of flowers, trees, birds, mammals, insects and even our scaly reptile friends. The South Gloucestershire Council nature team are on a mission to share the wonderful world of churchyards through the new 'Wild About Churchyards' project by running a mix of free nature themed events, from building bug hotels to bat walks.

St James the Elder's churchyard in Horton was first on our list, and it did not disappoint. On the 15th July, we ran a wildflower meadow survey to record as many flowers and grasses as we could. We used the free iNaturalist app to help with ID and to add the findings to the environmental records centre - check out the app for yourself and get recording any species anywhere for free!



We recorded more than 30 species of flowers and grasses across the closed churchyard - fantastic! A big section of the churchyard is left to grow long throughout spring and summer, which has greatly improved the diversity of species by allowing flowers to grow tall and set seed ready to flower again the following year. Pathways have been mown through the tall meadows, so you can still enjoy a walk through the grounds and appreciate the nature around you.

If you would like to find out more about the Wild About Churchyards project, to get involved or request the full meadow survey results, feel free to get in touch with Daisy Finniear via email daisyfinniear@gmail.com.

(Ed – for full results of all the wild flowers found in the survey, please look at end of newsletter)

Other news

The Horton Phone box – under 'new management'

Sara Gray writes:

Jane Cox and I have now taken over the 'running' of the phone box lending library.

Thank you to everyone who has donated books in the past and will do so in the future. As ever, we are in need of children's books so please think of the phone box if you are having a clear out. I'm afraid we are unable to accept magazines or DVDs and donated books will be placed on the shelves at our discretion. I will endeavour to rotate the books weekly (depending on donations) and books that have been there for a while will be donated to charity.

If you have any suggestions for the phone box, please get in touch.



Village Hall improvements

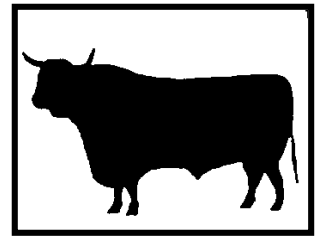
You will have noticed something has happened to the entrance of the village hall. Say 'goodbye' to the potholes; say 'hello' to the lovely new block paving. It really does look so much better.

Many thanks to Nick Rugman and SJP Paving for all their hard work.

(Ed – I was going to put in a picture of what it looks like, but I suggest that you just go along and have a look for yourselves – it looks amazing !!)

HORTON AND LITTLE SODBURY VILLAGE NEWSLETTER

Edited by Horton and Little Sodbury Village Hall Committee
Further information of events and news on www.halsvh.org.uk



Sing2Remember – at the Oasis Chipping Sodbury Baptist Church

Sing 2 Remember groups are supported, dementia friendly singing sessions, delivered in community venues across Gloucestershire as well as online. These uplifting sessions are about singing together, sharing memories, making friendships, and accessing support if needed.

Sing 2 Remember is for:

- People with dementia still living at home and those that care for them
- People experiencing loneliness or isolation
- People who love to sing, but no longer feel comfortable singing in a choir

Kay Tily, Volunteer Co-ordinator (South Glos) writes:

Based on the benefits of community singing, we welcome anyone who enjoys songs from across the years to come and join us. We provide books of words and a warm welcome to all.

As a charity we do focus on people living with or supporting people living with dementia.

However, this is an opportunity for anyone to come along and enjoy being together, singing and generally having fun. We are very lucky and grateful to have the wonderful Oasis at CSBC venue available to us.

We gather on the first and third Wednesdays of the month, ready to greet you from 10.30 with singing from 11-12.

For further information, please contact Kay on 07722505567.

Church News #1 – we welcome Revd Chris Butler

Martin May writes:

Very pleased to share with you that the Sodbury Vale Benefice have appointed a new rector. Revd Chris Butler will be joining us from Pilton, Somerset in October and the licensing service will take place in Chipping Sodbury on 4th October. We will keep you posted as to when she will be taking her first service in Horton and we would be delighted to see as many of you as possible so we can make her very welcome



Church News #2 – Teas at St James' Church, Horton

Martin May writes:

As many of you will know "Teas" have started in the church on Saturdays from 10.30 - 4.30 to raise much needed funds for our church repairs. On the subject of fundraising there will be a leaflet dropped through your door very soon (well, a begging letter!) with details of how you can donate. Any suggestions as to additional fundraising ideas are welcomed.

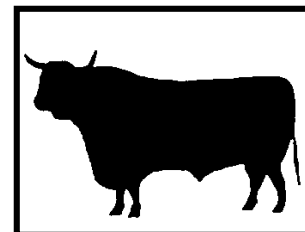
Church News #3 – vacancies on the Parochial Church Council

Martin May writes:

We do have 2 vacancies on the Parochial Church Council. The PCC has a responsibility for the financial affairs of the church and for the maintenance of the assets i.e. the church itself. The next few years will be of vital importance to the church as we need to raise in excess of £100,000, so if you would like to join us, please see one of the Church Wardens.

HORTON AND LITTLE SODBURY VILLAGE NEWSLETTER

Edited by Horton and Little Sodbury Village Hall Committee
Further information of events and news on www.halsvh.org.uk



What's happening at the Tyndale Baptist Chapel ?

Those of you that have gone along the road at Little Sodbury End may have noticed that there is something happening on at the Tyndale Baptist Chapel.

You will have seen the signs "Shepherds Hut".

There is a major project of renovation underway, and we hope to have more details and some pictures for our next newsletter. Watch this space.



Useful Local Information

Horton & Little Sodbury Village Hall

Web site: www.halsvh.org.uk
Chair chairman@halsvh.org.uk
Hall bookings emma@halsvh.org.uk or on 01454 322879

Quick Quiz

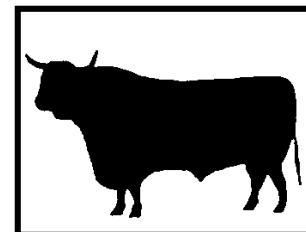
Answers to last edition's quiz

- 1.. What is a group of baby porcupines called ? **a Prickle**
2. How many digits do pandas have on each hand ? **6**
3. How many bones does a shark have ? **0 (zero)**
4. What is the offspring's name between a male lion and a female tiger ? **a Liger**
What is the offspring's name between a female lion and a male tiger ? **a Tigon**
5. What organ does a giraffe use to clean its ears ?? **its tongue**

5 quick questions to test your general knowledge. Answers provided in next edition

1. Which is the only edible food that never goes bad ?
2. The unicorn is the national animal of which country ?
3. What do you call a group of ravens ?
4. What is measured in "Mickey's" ?
5. What's the name of the talking snowman in Disney's Frozen ?

HORTON AND LITTLE SODBURY VILLAGE NEWSLETTER



Edited by Horton and Little Sodbury Village Hall Committee
Further information of events and news on www.halsvh.org.uk

The extra section ...

Wild About Churchyards: Horton Meadow Survey

Full results of all the wild flowers found in the survey at Horton Church on 15th July.

MEADOW SURVEY	Species also recorded on iNaturalist		
Date: 15/07/23			
Surveyor: Daisy Finniear	BLUE = found in both mown and not mown		
Weather: Sunny spell in between thunder storms	YELLOW = found in mown area only		
	PURPLE = found in not mown area only		
SPECIES	PREVELANCE (High, Medium, Low)	MOWN or NOT MOWN	COMMENTS
Yorkshire fog	L	Mown	
Ribwort plantain	M	Mown	
Creeping buttercup	L	Mown	Not in flower
Common vetch	L	Mown	Not in flower
red and white Clover	M	Mown	most not in flower, a few flowering
Cocks foot	L	Mown	
Self heal	M	Mown	In flower, appears to favour the mown area
Common daisy	L	Mown	In flower
Goose neck moss	L	Mown	One section of moss amongst grasses
Hawkbit	M	Mown	Appears to favour mown area - many in flower.
Wood dock	L	Mown	
Perinéal rye grass	M	Mown	
Cow parsley	L	Mown	Not in flower
Yorkshire fog	H	Not Mown	
Ribwort plantain	H	Not Mown	
Oxeye daisy	H	Not Mown	Most gone to seed now, good for next years return
Cocks foot	M	Not Mown	
Herb robert	L	Not Mown	Mostly on borders near church buildings, in flower
Common daisy	L	Not Mown	
Germander speedwell	L	Not Mown	Mostly on borders near church buildings, not in flower
False oat grass	H	Not Mown	
Common bent grass	M	Not Mown	
Common hogweed	L	Not Mown	Gone to seed
Curled dock	L	Not Mown	
Sweet vernal grass	M	Not Mown	positive indicator grass
Sow thistle	L	Not Mown	
Self heal	M	Not Mown	In flower, taller than non mown side and some gone to seed.
Common sorrel	L	Not Mown	
Primrose	L	Not Mown	Not in flower, mostly on or near graves
Red and white clover	H	Not Mown	in flower
Creeping buttercup	M	Not Mown	Some in flower
Spear thistle	L	Not Mown	In flower
Birds foot trefoil	M	Not Mown	In flower
Yellow rattle	L	Not Mown	Gone to seed - hope more will take next year!
Common vetch	M/H	Not Mown	Gone to seed - hope more will take next year!
Crested dogs tail	M	Not Mown	Positive indicator grass
Hawkbits	M/H	Not Mown	Many gone to seed
Wood dock	L	Not mown	
Perennial rye grass	L/M	Not mown	
Ragwort	L	Not mwn	Isolated area with 5 plants. Great to leave - safe for cinnibar moth caterpillar
Meadow vetch	M	Not Mown	

Explanations for the "Did you know ..."

Australia is wider than the moon.

The moon sits at 3,400 kilometers (2,113 miles) in diameter, while Australia's diameter from east to west is almost 4,000 km (2,485 miles).

Switzerland prohibits the ownership of just one guinea pig.

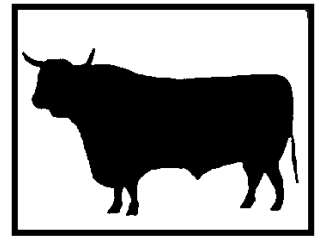
Since guinea pigs are such social creatures, one guinea pig would get lonely so having just one is considered animal abuse in Switzerland.

When the moon is directly overhead, you will weigh slightly less.

The gravitational force of the Moon acting directly above the object reduces the gravitational force of Earth a little. When the moon is directly overhead, you are going to weigh 0.5g lighter as the moon attracts you in the same way it attracts water when it makes tides.

HORTON AND LITTLE SODBURY VILLAGE NEWSLETTER

Edited by Horton and Little Sodbury Village Hall Committee
Further information of events and news on www.halsvh.org.uk



What's in the container – looking for a new home

- Lots of wood (sheets of boarding / chipboard / etc)
- Large box of side/dinner plates
- 2 x String of outdoor lights (no bulbs)
- Pair of small shelves (with wall brackets)
- 2 x metal shelving units (approx. 6ft x 3ft)
- Range of fluorescent strip lights
- Roll of lino
- Decorating equipment (paint rollers / trays / brushes + paint !)
- 2 x radiator thermostatic valves
- Multiple percussion instruments
- Box of various electrical plugs and sockets
- Box of large halogen stage lanterns (spot lights and flood lights)
- 2 x "rope lights"

Items to be sold separately:-

- Floor polisher
- Old railway lamp
- Indoor bowls mat + set of bowls

The Unclassified Ads Section

Horton Social Club – Beer Festival

Horton Social Club
BEER FESTIVAL
live music
Real and Ciders
18th - 20th August 2023
A date for your diary. more
info to follow.

For your fencing, forestry and firewood needs ...

M & G
Countryside Development
Ltd
www.m-g.org.uk
Tel: 07443 966 408
Email: buisness@m-g.org.uk

- ◇ Fencing
- ◇ Forestry
- ◇ Firewood

-0o0-0o0-0o0-0o0-0o0-0o0-0o0-