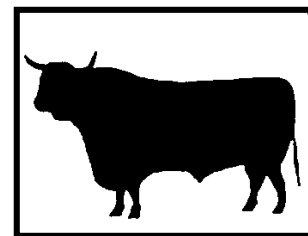


# HORTON AND LITTLE SODBURY VILLAGE NEWSLETTER

Edited by Horton and Little Sodbury Village Hall Committee  
Further information of events and news on [www.halsvh.org.uk](http://www.halsvh.org.uk)



February 2024

Please send items for next newsletter by 25<sup>th</sup> March 2024 to [newsletter@halsvh.org.uk](mailto:newsletter@halsvh.org.uk)

## Editorial

Only one month in and already we have had enough weather to last the whole year. Never mind – Easter is just around the corner – I know this from the amount of Easter Eggs that are in the shops !!

So welcome to the first Newsletter of 2024. We have dates for the diary; we have reviews of what has happened recently; we have updates of things of local interest ... all this in an e-mail, with even more content in the attached PDF.

Now, if you have anything you would like included in the next newsletter, be it forthcoming events, or maybe just a report on what has happened ... from the school, from the church, from the Social Club, from local organisations and clubs, from anything happening in the village, then please let us know by 25<sup>th</sup> March 2024 – e-mails sent to [newsletter@halsvh.org.uk](mailto:newsletter@halsvh.org.uk)

Thank you.

## Dates for the Diary

Here is a list of what will be happening in and around Horton & Little Sodbury in the next few months

The 6 Nations Rugby @ Social Club	from 3 <sup>rd</sup> Feb	- see below for details
Hawkesbury & Horton WI Jigsaw race	Sun 4 <sup>th</sup> Feb	- see below for details
The Horton Hoe Down @ HVH	Fri 9 <sup>th</sup> Feb	- see below for details
The Horton Quiz Trilogy @ HVH	16 <sup>th</sup> Feb + 15 <sup>th</sup> Mar	- see below for details
The Horton Bull Run @ HVH	Sun 21 <sup>st</sup> April	- more details next newsletter
May Day Celebrations @ HVH	Mon 6 <sup>th</sup> May	- more details next newsletter
Sausage & Cider Night @ HVH	Fri 20 <sup>th</sup> Sept	- more details next newsletter
Oktoberfest @ HVH	Fri 12 <sup>th</sup> Oct	- more details next newsletter

**Boxercise classes** are every Monday and Wednesday evenings from 6.30- 7.30pm at Village Hall.

**Pilates classes** starting again – see below or contact Sue Webb on [sue@coreandmore.co.uk](mailto:sue@coreandmore.co.uk).

## Dates for the Diary in detail

### 6 Nations Rugby on the big screen

from Sat 3<sup>rd</sup> Feb. @ Horton Social Club

Looking for somewhere to watch the rugby Six Nations tournament?

Look no further than meeting up at the Horton Social Club.

There's beer; there's hot pies at half time; there's a big screen - what more could you want.

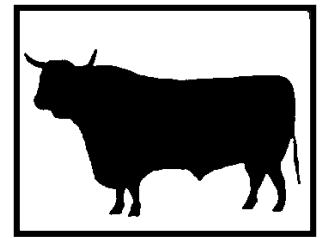
The first game is on Sat 3<sup>rd</sup> Feb, with Italy playing England - doors open at 13:45, game starting at 14:15.

See media for timings of forthcoming matches.



# HORTON AND LITTLE SODBURY VILLAGE NEWSLETTER

Edited by Horton and Little Sodbury Village Hall Committee  
Further information of events and news on [www.halsvh.org.uk](http://www.halsvh.org.uk)



## Hawkesbury & Horton WI Jigsaw Race

Sun 4<sup>th</sup> Feb. @ Hawkesbury

A date for your diary.



Jenny Harris from H&H WI writes :

There is going to be a Jigsaw Race on Sunday 4<sup>th</sup> February, from 2pm to 4pm at Hawkesbury Village Hall. The cost is £5 per person which includes tea and cake. Cash on the door. You can be part of a team of up to 4 people, or you can come alone and join one.

For more details, call Kate on 07738 334819 to book your place or Louise on 07817 226612.

theWI  
INSPIRING WOMEN

## The Horton Hoe Down

Fri 9<sup>th</sup> Feb. @ Horton Village Hall

A “ye-hah” date for your diary.

Join the Friends of Horton School for The Horton Hoe Down.

This is going to be held on Friday 9<sup>th</sup> February at Horton Village Hall, starting at 7pm, and finishing around 11pm.

Contact Tess on 07810 203059 for tickets

- £12 for adults, £5 for children and Under 4s are free.

There will be live music (provided by The Bees Knees) and dancing.

There will be food and bar available. And western dress encouraged !!.



**And there will be an auction** – where the prizes include (but not limited to) ...

- 3 month membership & personal training session @ Anytime Fitness
- Afternoon tea with Prosecco for 2 @ De Vere Cotswold Water Park
- Reflections voucher
- The Wave voucher
- Family Disc Golf @ Mendip Activity Centre
- Family pass to Jump Bristol
- Family pass to Cotswold Motor Museum
- 4 tickets to Wookey Hole
- Day pass to Noah’s Ark Zoo Farm
- 1 adult & 1 child ticket to Cotswold Farm Park



## Part 2 of the Horton Quiz Trilogy !!

Fri 16<sup>th</sup> Feb. @ Horton Village Hall

Dates for your diary.



It’s Part 2 of the great Horton Quiz Trilogy.

Please make every effort to come along on Friday 16<sup>th</sup> February at 7pm, with the questions starting at 7:30pm. The cost is £10 per table; it’s a maximum of 4 per team; there will be winners at each quiz, but also the scores will be accumulated over the three quiz nights to award an overall winner. There will be a raffle and the bar will be open as well !

And this month’s quiz master is Holly Standerwick, with money made from the quiz going towards her fund raising for her school trip to Borneo where she will be doing conservation work and spending time in local schools.

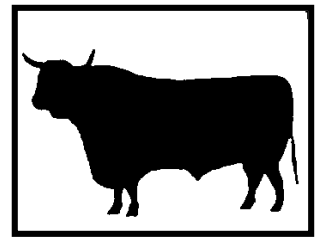
So please, please make every effort to come along and support her.

Part 3 of the Horton Quiz Trilogy is on Friday 15<sup>th</sup> March.

*(Ed –yes, I know it’s cold and wet and dark out there, but please please make every effort to come out and support Holly in this venture – it will be her first time in running a quiz, and it promises to be a great night !)*

# HORTON AND LITTLE SODBURY VILLAGE NEWSLETTER

Edited by Horton and Little Sodbury Village Hall Committee  
Further information of events and news on [www.halsvh.org.uk](http://www.halsvh.org.uk)



## What else has happened

### The Village Christmas Card sign-up evening

Thanks to all who came along to the Village Christmas Card sign-up evening on the 1<sup>st</sup> December last year. It was a really good festive opportunity to meet up with friends, and share a glass of mulled wine (or two). The evening and the card donations made over £200 for local charities (including the St James' Church Roof Appeal, and Little Sodbury Church).

*(Ed –and a special well done to Brian Jarvis for pulling together the excellent Christmas e-card)*

### Christmas Tractor Run

Wow. Just WOW !!!

Tractor owners from far and wide came out on Sunday 17<sup>th</sup> December for a Christmas Tractor Run. It was an amazing success with over 75 tractors in attendance, all beautifully decorated in tinsel and lights. Father Christmas was also in attendance and was very pleased to see all the children on the way around.

The road run ended up at the Horton Social Club with an auction and raffle with the grand total of £2420.20 raised for the farming charity RABI.

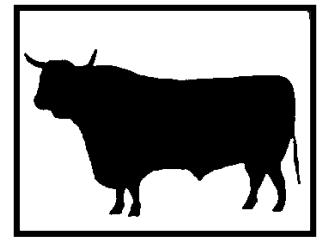
The evening ended with karaoke and dancing with much enjoyment made by all.

*(Ed –and here are just some of the amazing pictures from the Tractor run ...)*





# HORTON AND LITTLE SODBURY VILLAGE NEWSLETTER



Edited by Horton and Little Sodbury Village Hall Committee  
Further information of events and news on [www.halsvh.org.uk](http://www.halsvh.org.uk)

## Other news

### Church News

Church Wardens and Martin May write:

Pleased to report the Christmas services were very well attended. The carol service (for the first time) was held in the morning, and we were delighted that over 100 people attended. Perhaps we will consider the timing for this year?

The Christmas Eve communion was also well attended. Thanks for your support.

We have two weddings booked at Horton (so far) this year. Something for the choir and bell ringers to look forward to.

Summer teas will be served at the church from the end of June to early August. Slightly shorter this year as many people are away on holidays, and the team (who are not getting any younger) tend to get worn out!!

The Horton village hall is booked for our Harvest Lunch on 27th October. Will confirm costs closer to the time.

Nothing other to report on roof repairs/fund raising other than we are still a long way off our target.

A recent visitor to the church (who is walking the Cotswold Way and visiting churches en route) left a message that pictures can be found on his "Instagram" page. There are a few of Horton (and the court), Little and Old Sodbury.

There are also many more pictures (and comments if you click on a photo) of other churches in this country and abroad. Well worth a look.

[Parish Churches \(@parish.churches\)](https://www.instagram.com/parish.churches) • [Instagram photos and videos](https://www.instagram.com/parish.churches)



Thank you all.

### Exam Invigilators needed !

Jenna Jessop of Yate Academy writes:

We are on the lookout for new Exam Invigilators to join our existing team in the monitoring of both mock and public exams.

The main exam season is May and July, but there are many other exams throughout the year that also need invigilating. Full training will be provided, so previous experience is not necessary.

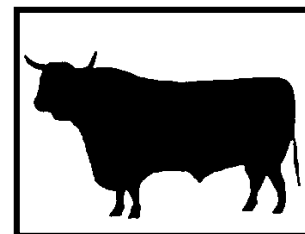
If you are interested, then please contact Jenna on [jjessup@yateacademy.co.uk](mailto:jjessup@yateacademy.co.uk)

Thank you.



-o0o-o0o-o0o-o0o-o0o-o0o-o0o-o0o-o0o-

# HORTON AND LITTLE SODBURY VILLAGE NEWSLETTER



Edited by Horton and Little Sodbury Village Hall Committee  
Further information of events and news on [www.halsvh.org.uk](http://www.halsvh.org.uk)

## Useful Local Information

### Horton & Little Sodbury Village Hall

Web site: [www.halsvh.org.uk](http://www.halsvh.org.uk)  
Chair [chairman@halsvh.org.uk](mailto:chairman@halsvh.org.uk)  
Hall bookings [emma@halsvh.org.uk](mailto:emma@halsvh.org.uk) or on 01454 322879

## Quick Quiz

### Answers to last edition's quiz

- 1.. How many ghosts appear in A Christmas Carol? **Four**
2. Eating KFC as a Christmas time meal is a widely practiced custom in which country? **Japan**
3. If you're born on Christmas Day, what's your star sign? **Capricorn**
4. If there are 365 days in a year, what number day is Christmas Day? **359**
5. In the English Victorian carol what was seen sailing in 'On Christmas Day, on Christmas Day':? **3 Ships**

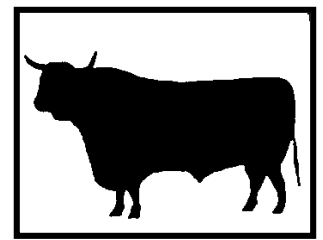
### Five quick questions to test your knowledge ! Answers provided in next edition

1. Who or what is the "Great Chieftain o' the Pudding Race" ?
2. In the UK, how many teaspoons are there in a tablespoon?
3. What two letters are worth the most points in Scrabble?
4. What is celebrated on February 2 in the US and is also the name of a film starring Bill Murray?
5. True or false – only female ducks quack.

-o0o-o0o-o0o-o0o-o0o-o0o-o0o-o0o-o0o-

# HORTON AND LITTLE SODBURY VILLAGE NEWSLETTER

Edited by Horton and Little Sodbury Village Hall Committee  
Further information of events and news on [www.halsvh.org.uk](http://www.halsvh.org.uk)



Join the Friends of Horton School on Friday 9<sup>th</sup> February at Horton Village Hall.

JOIN THE FRIENDS OF  
HORTON SCHOOL

# THE HORTON HOE DOWN

9 FEBRUARY 24 7PM-11PM

HORTON VILLAGE HALL

LIVE MUSIC & DANCING  
FOOD & BAR  
AUCTION

CONTACT TESS ON 07810203059  
FOR TICKETS  
£12 ADULT  
£5 CHILD  
UNDER 4'S FREE  
WESTERN DRESS ENCOURAGED

JOIN THE FRIENDS OF  
HORTON SCHOOL

# THE HORTON HOE DOWN

## AUCTION ITEMS

(INCLUDE BUT NOT LIMITED TO)

- 3 MONTH MEMBERSHIP & PERSONAL TRAINING SESSION [w] ANYTIME FITNESS
- AFTERNOON TEA WITH PROSECCO FOR 2 [w] DE VERE COTSWOLD WATER PARK
- REFLECTIONS VOUCHER
- THE WAVE VOUCHER
- FAMILY DISC GOLF [w] MENDIP ACTIVITY CENTRE
- FAMILY PASS TO JUMP BRISTOL
- FAMILY PASS TO COTSWOLD MOTOR MUSEUM
- 4 TICKETS TO WOOKEY HOLE
- DAY PASS TO NOAH'S ARK ZOO FARM
- 1 ADULT & 1 CHILDS TICKET TO COTSWOLD FARM PARK