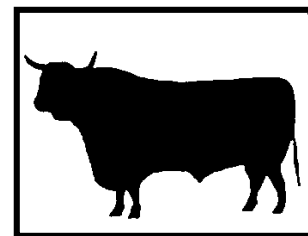


# HORTON AND LITTLE SODBURY VILLAGE NEWSLETTER

Edited by Horton and Little Sodbury Village Hall Committee  
Further information of events and news on [www.halsvh.org.uk](http://www.halsvh.org.uk)



August 2024

Please send items for next newsletter by 23<sup>rd</sup> September 2024 to [newsletter@halsvh.org.uk](mailto:newsletter@halsvh.org.uk)

## Editorial

So, is anyone else watching the Olympics ? I've only watched a bit, and mainly it's been the "alternative sports" that you only watch at the Olympics. Events like the synchronised diving, the kayaking & canoeing, the fencing and the gymnastics – they are all amazing. But already I am an expert ("oh, they came out of that tuck a little early", to name but a few phrases I now use !!). So much happening over in Paris ... and, actually, there is so much happening here in Horton as well. Just check out the "Dates for the Diary" section.

And if you have anything you would like included in the next newsletter, be it forthcoming events, or maybe just a report on what has happened ... from the school, from the church, from the Social Club, from local organisations and clubs, from anything happening in the village, then please feel free to let us know by 23<sup>rd</sup> September – e-mails can be sent to [newsletter@halsvh.org.uk](mailto:newsletter@halsvh.org.uk)

Thank you.

## Dates for the Diary

Here is a list of what will be happening in and around Horton & Little Sodbury in the next few months

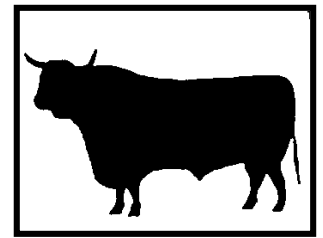
Horton Beer Fest @ Horton Social Club	16th to 18th Aug	- see below
Hawkesbury Horticultural Show	31 <sup>st</sup> Aug	- see below
Macmillan Coffee Morning @ HVH	Sun 6 <sup>th</sup> Oct	- see below
St Adeline's Church Harvest Service	Sun 6 <sup>th</sup> Oct	- more details next newsletter
Oktoberfest @ HVH	Sat 12 <sup>th</sup> Oct	- more details next newsletter
St James' Church Harvest Festival	Sun 13 <sup>th</sup> Oct	- more details next newsletter
Horton & Little Sodbury Village Hall AGM	Mon 21 <sup>st</sup> Oct	- more details next newsletter
St James' Church Harvest Lunch @ HVH	Sun 27 <sup>th</sup> Oct	- more details next newsletter
Whirligig of Time - Malvolio @ HVH	Fri 15 <sup>th</sup> Nov	- see below
Craft Fair @ HVH	Sat 16 <sup>th</sup> Nov	- see below
Christmas Cabaret @ HVH	Fri 6 <sup>th</sup> Dec	- see below
St Adeline's Church Carol Service	Fri 20 <sup>th</sup> Dec	- more details next newsletter
St James' Church Carol Service	Sun 22 <sup>nd</sup> Dec	- more details next newsletter
Rockhampton Wind Quintet concert @ HVH	Fri 31 <sup>st</sup> Jan '25	- more details next newsletter
Ninebarrow @ HVH	Sun 16 <sup>th</sup> Mar '25	- see below

**Boxercise classes** are every Monday and Wednesday evenings from 6.30- 7.30pm at Village Hall.

**Pilates classes** starting again – see below or contact Sue Webb on [sue@coreandmore.co.uk](mailto:sue@coreandmore.co.uk).

# HORTON AND LITTLE SODBURY VILLAGE NEWSLETTER

Edited by Horton and Little Sodbury Village Hall Committee  
Further information of events and news on [www.halsvh.org.uk](http://www.halsvh.org.uk)



## Dates for the Diary in detail

### Beer Festival

**Fri 16<sup>th</sup> to Sun 18<sup>th</sup> August @ Horton Social Club**

Now this IS a set of dates for your diary.



Yes, it's that time of year again. The annual Horton Beer Festival will be flowing from Friday 16<sup>th</sup> to Sunday 18<sup>th</sup> August at the Horton Social Club. There will be real ale, ciders and live music with Paul "Clarky" Clark on Friday, and a live female singer on Saturday with Karaoke. Open from 1pm all 3 days.  
(Ed – Knock Knock !                      Who's there ?  
Diana.    Diana who ?  
Diana thirst – can I have a beer !!)

### Hawkesbury Horticultural Show

**Sat 31<sup>st</sup> August @ Hawkesbury VH**

Vicky Rispin, Show Booking Secretary writes:

The Hawkesbury Horticultural Show & Fair is on Saturday 31st August.

Gates open at 12.30pm, with the Carnival setting off from the war memorial on The Plain at 1pm (please note that the road is closed between 12:30 and 1:30pm).

On the Showground - Fairground rides, mountain bike display, Forest school activities, 40 stalls, refreshments in the village hall, beer and Pimms tents, competition marquee and produce auction at 6.30pm.

Show schedule and Pre paid tickets available from Hawkesbury Stores, Hawkesbury Upton but cash or card payments accepted on the day.

Full details on the website [www.hawkesburyshow.org](http://www.hawkesburyshow.org) A great day out for all the family

(Ed – please note – card machines available for many stalls, but it would be a good idea to bring cash too !!)

### Macmillan Cancer Coffee Morning

**Sun 6<sup>th</sup> October @ Horton Village Hall**

Mags Bond writes :

This year the coffee morning will be a little later than normal on SUNDAY (yes, Sunday)

6th October, starting at 10am and finishing around 2pm.

Please put this date in your diaries! See you there!



### Craft Fair

**Sat 16<sup>th</sup> October @ Horton Village Hall**

Brenda Cordy writes :

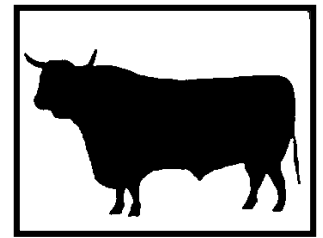


There is going to be a Craft Fair at Horton and Little Sodbury Village Hall on Saturday 16<sup>th</sup> November from 10am to 2pm, in aid of St Adeline's Church funds.

If you would like to book a table please contact Brenda Cordy on 07767 076985 or [brendacordy370@gmail.com](mailto:brendacordy370@gmail.com).

# HORTON AND LITTLE SODBURY VILLAGE NEWSLETTER

Edited by Horton and Little Sodbury Village Hall Committee  
Further information of events and news on [www.halsvh.org.uk](http://www.halsvh.org.uk)



## **The Whirligig of Time (a play by Richard Curnow)      Fri 15<sup>th</sup> Nov @ Horton Village Hall**

On Friday 15<sup>th</sup> November, starting at 7:30 at Horton Village Hall, you really need to come along to this one-man play, "The Whirligig of Time". What's it about? Well, check out the web site

<https://www.tortivetheatre.com/events-1/the-whirligig-of-time-gloucestershire>

"To hell with anger management! Malvolio from *Twelfth Night* was done wrong...notorious wrong; so-much-so that he swore to be revenged on the whole pack of those that carried out their campaign of cruel bullying and emotional torture. The *Whirligig of Time* sees us catch up with Malvolio as he relates, with a great deal of satisfaction, how skilfully he has kept his word."

'Early Bird Tickets' (at £12.50) are available now, but will increase in price nearer the time of the performance.  
(Ed – apparently I've been BARD from making more Shakespeare puns !!)

## **A Christmas Cabaret      Fri 6<sup>th</sup> December @ Horton Village Hall**

Another definite date for your diary – because it is never too early to think about Christmas !!

Ok, so here's a thing. It's been a long time since we have seen locals performing at the Hall, so we are going to put on a Christmas Cabaret. There will be people performing on stage; there will be mince pies; the bar will be open. It's Christmas !! All we need to do now is organise it.

Alison Barlow writes :

"In a bid to beat the Winter Blues it is suggested the village puts on another revue at the Village Hall. We are looking for any individuals, households, family/friend groups who have party pieces or short entertainments that they would be willing to perform before a friendly audience. Only rehearsals required are within your act – with everyone joining together on the day to enjoy the tomfoolery of their peers."

So if you fancy being a part of it in any capacity (either on stage or front of house), then please get in contact with either Alison Barlow or Tony Wake through [newsletter@halsvh.org.uk](mailto:newsletter@halsvh.org.uk), and put "Christmas Cabaret" somewhere in the Subject Line. We have had some interest already, but we can certainly do with a few more acts. Please come along and take part – it'll be great fun.

## **Ninebarrow returning to Horton      Sun 16<sup>th</sup> March 2025 @ Horton Village Hall**



Yes, Ninebarrow are returning to Horton Village Hall on Sunday 16th March. Back by popular demand, this multi award winning folk duo (and stars of TV, radio, online concerts and walking holidays) are back in Horton as part of their mini 2025 national tour.

It's a matinee performance, and so doors open at 1:45pm, with the concert starting at 2:30pm ... and yes, even at that time of day, the bar will be open !!

And there will be tea and cakes on sale too !!

Tickets are £17 (+57p booking charge), and are available via [www.ninebarrow.co.uk/horton](http://www.ninebarrow.co.uk/horton)

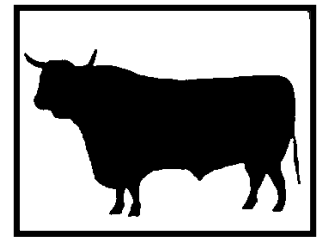
Book your tickets now to secure your seat – it's likely to be a sell out !!

(Ed – I know it's a long way away, but already I'm looking forward to seeing them live again in Horton.

And seriously, we have sold tickets already, so if you want to come, then get your tickets now !!)

# HORTON AND LITTLE SODBURY VILLAGE NEWSLETTER

Edited by Horton and Little Sodbury Village Hall Committee  
Further information of events and news on [www.halsvh.org.uk](http://www.halsvh.org.uk)



## A roundup of other news

### Father's Day Breakfast

There were fathers, mothers, children and grandparents !! In fact, everyone who came to the village hall on Sunday 16th June was treated to wonderful breakfast of eggs, bacon, sausage, hash browns, beans & tomatoes with toast & marmalade and lots of tea & coffee.

Well done to Barbera and her team for producing a superb feast. It was lovely to see so many people there.

### Get to know Horton

On Friday 12<sup>th</sup> July, Alison Barlow gave a "Horton Historical Hearsay" talk – a photographic recollection of village activities of the last 30 years and to test your knowledge of all things Horton.

Caroline Bannister wrote:

Thirty years of thanks must go to Alison Barlow for the nostalgic look back over the last thirty years of events at the Village Hall!

There were way too many photos of me wearing 'the fashions of the day' but apart from that it was a very heart-warming evening!

I know Alison (ably supported by Keith and Leigh) spent many hours collecting and assembling the images which we saw on screen. Alison's commentary was perfect for each section. It was delightful to see that Alison had included snaps of 'absent friends', a lovely opportunity to remember them in happier times.

It was fab to see so many villagers there enjoying the walk down memory lane - where, oh where have the years gone???

*(Ed – Well done, Alison, on what was a fabulous talk and quiz. And I'm hearing that there might be a reprise later in the year for those who were not able to come along ... and for those who may want to see it all again !!)*



### The Sodbury Slog

For those of you who don't know, the Sodbury Slog is quite simply not for the faint-hearted. This is a lung-busting, trainer-ruining, hill-climbing, multi-terrain challenge held over and through some of Chipping Sodbury's and Horton's and Little Sodbury's most stunning countryside.

Attracting around 1,200 runners, the race is run each year on Remembrance Sunday – this year it will be held on Sunday 10<sup>th</sup> November, starting just after 11 o'clock.

This race has attracted many Hortonians in the past, usually taking part in fancy dress – I mean, if you are running 10 miles through mud and streams, why would you not make it more difficult for yourself !

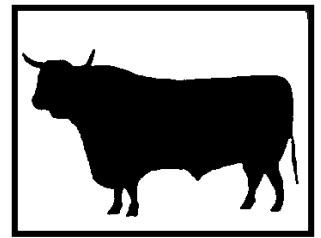
If you would like to have a go, then check out <https://sodburyslog.co.uk/event-2024/> for details on how to enter. However, if you fancy marshalling, or just coming along and supporting, then please let Tony Wake know (through the newsletter e-mail address [newsletter@halsvh.org.uk](mailto:newsletter@halsvh.org.uk)

Go on – you know you want to !!



# HORTON AND LITTLE SODBURY VILLAGE NEWSLETTER

Edited by Horton and Little Sodbury Village Hall Committee  
Further information of events and news on [www.halsvh.org.uk](http://www.halsvh.org.uk)



## Summer Tractor Run

The Summer Tractor Run took place on Sunday 28th July,  
Chris Bateman writes :

The local summer tractor road run had another fantastic day with 40 tractors in attendance! The weather was well and truly behind us with beautiful sunshine. Our route took us from Horton, Hawkesbury Upton, Hillesley, Kingswood, Charfield, Wickwar, Yate and Chipping Sodbury where so many people turned up to wave and support us - many thanks to all of you!



Once we returned back to Horton Social Club, we had the "Best Tractor Award" which was presented to Peter Hawker and his beautifully restored David Brown 996.

Our auction and raffle was once again well supported. All in all, it raised over £1,800 for our chosen charity - the Hawkesbury Upton's Play Park.

Finishing off the evening, we enjoyed Paul Clarky Clark's Singing and music!

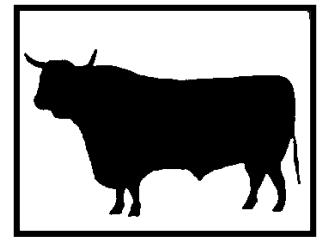
Many thanks to our organisers, the caterers, The Horton Social Club, the Horton Village Hall, Pincots Farm, the local land owners (for parking), Rich Mcd for the photos, and all of our wonderful supporters.

Until next time !



# HORTON AND LITTLE SODBURY VILLAGE NEWSLETTER

Edited by Horton and Little Sodbury Village Hall Committee  
Further information of events and news on [www.halsvh.org.uk](http://www.halsvh.org.uk)



## Village Agent Update

### *Paul Jones - Village Agent Update*

*Help, support, and advice for residents of the Cotswold Edge area, which embraces the villages of Acton Turville, Badminton, Little Badminton, Hawkesbury Upton, Wickwar, Horton and Little Sodbury.*



I recently visited the Carers Centre, which is based in Fishponds, Bristol but their services extend to cover South Gloucestershire. They offer a range of services for carers and are keen to support people living in our rural communities. I know that there are many relatives, friends and neighbours providing care and support in the Cotswold Edge area. I hope the information below is of use and please contact me if you need any further advice or help.

Carers Support Centre is a charity offering a range of services to help improve life for carers in Bristol and South Gloucestershire. Here are some of the ways we can help:

- **Carers Emergency Card:** If a carer has an accident or is taken seriously ill, carrying this card will ensure the person they care for continues to receive the support they need.
- **Carers Assessments:** Help with getting and completing an assessment. This allows carers to get help and support for themselves and the person they care for.
- **One-to-one support:** Advice and information. Help with filling in forms and applying for benefits such as Carers Allowance. Help with communicating with health and social care professionals.
- **Parent carers:** Supporting parent carers with a child under 18 who has disabilities/additional needs.
- **Carers support groups:** A safe, confidential space to meet with other carers to share information and give support to each other.
- **Wellbeing service:** We provide counselling and befriending services, as well as running Walk and Talks where our friendly support worker leads group walks offering a listening ear and providing support to help carers in their caring role.
- **Hospital support:** Information and support for carers in hospital and help with discharge planning.
- **Carer involvement:** Support for carers to get their voices heard, so they can influence health and social care provision.
- **Young Carers:** Supporting children under 18 years old, including individual and family support, activities, groups and outings.

All these services are free to carers and brought to you by a team of caring and compassionate professionals. Please don't be afraid to reach out for the help you need.

If you'd like more information visit our website at [www.carerssupportcentre.org.uk](http://www.carerssupportcentre.org.uk) or call CarersLine on 0117 965 2200.

Village Agents can make a real difference to their communities by working with local people and support agencies. More information on the project can be found here: [www.wern.org.uk/village-agents](http://www.wern.org.uk/village-agents)

Paul

Contact me on:

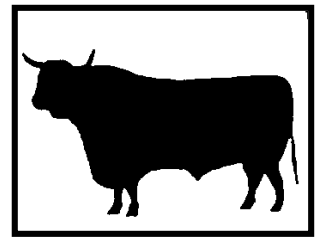
T: 07795442272

E: [paul@wern.org.uk](mailto:paul@wern.org.uk)



# HORTON AND LITTLE SODBURY VILLAGE NEWSLETTER

Edited by Horton and Little Sodbury Village Hall Committee  
Further information of events and news on [www.halsvh.org.uk](http://www.halsvh.org.uk)



## Church News

### Update from St James' Church, Horton

Martin May writes :

- The Saturday teas got off to a precarious start! Tina was in A&E when the doors opened so a big thanks for the "team" who stepped up to the plate (and cups!) to get things moving. Tina joined in shortly after 2.00pm to see the old gazebo collapse due to the wind and heavy rain. Luckily the other (newer) gazebo was able to "weather the storm". The second week also got off to a wet and windy start and this time it proved to be the end for the old gazebo !  
Do come along between 12.00 and 4.00 and join in. We have been lucky that Graham (our organist) has been able to join us on a couple of occasions to play the piano and I am sure that this adds to the joy.
- For anyone who has walked past the church in the past couple of weeks you will have noticed repairs to the wall (by the back entrance to the Court, by the post box) taking place. The work is being carried out by the SGC (as the integrity of the wall and upkeep of the churchyard is their responsibility) and I am pleased to report the repairs are going well.
- SGC also, recently, carried out a tree survey of "our" trees. Overall they are in pretty good condition but some maintenance work is needed to a few which will take place later this year. They did make mention of some trees belonging to the National Trust that are showing signs of concern. We have spoken with NT and they are aware.
- Nothing to report on the roof repairs. We are awaiting our quinquennial inspection (yes every 5 years!) soon, so will be able to report on what actions we need to put in place. Fundraising continues for this (and general upkeep) and I am pleased to report that we have received our first 3 donations via easy fundraising ... see below, as they say, from little acorns...  
If you join today, we could win a donation: <https://join.easyfundraising.org.uk/st-james-the-elder-church-horton-south-gloucestershire/zvgzly/c2s/nm3OGFTL/CR132/facebook/>
- Great news, we've raised £1.51 on #easyfundraising so far! Thank you to our supporters for raising free donations for us when you shop online with over 8,000 retailers. We would love to get new supporters signed up and joining in too, so please take two minutes to get started.
- Our next "big" events will be the Harvest Festival on 13th October and the Harvest Lunch on 27th October. This will be in a new format this year... "Ploughman's and Puddings".  
Tickets available from Tina, book and pay now to avoid disappointment ! .
- And lastly, the Carol Service will be held on Sunday 22<sup>nd</sup> December, starting at 11:15.

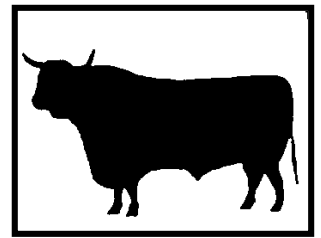


I would also like to share with you this amazing piece of artwork that was in the order of service at a recent wedding.

Many thanks to Nick & Caroline Harley who liaised with the artist and generously sponsored the copyright so we can use it.

# HORTON AND LITTLE SODBURY VILLAGE NEWSLETTER

Edited by Horton and Little Sodbury Village Hall Committee  
Further information of events and news on [www.halsvh.org.uk](http://www.halsvh.org.uk)



## Update from St Adeline's Church, Little Sodbury

Brenda Cordy writes :

- Thank you to everyone that helped at the recent working party to tidy the church yard. It was suggested to hold these on a regular basis. As well as those that did the manual work we must also include those that donated refreshments and the making of many mugs of tea and coffee. Thank you.
- There will be a change to the time of Evensong services this winter.  
From October (clocks change) the service will be brought forward to 4pm from 6pm.
- Future dates for your diary.
  - The Harvest Service is on Sunday 6<sup>th</sup> October, starting at 6pm.
  - The Carol Service is on Friday 20<sup>th</sup> December, starting at 6pm.
  - There is a Craft Fair at Horton and Little Sodbury Village Hall on Saturday 16<sup>th</sup> November, starting at 10am and finishing around 2pm. If you would like to book a table please contact Brenda Cordy on 07767 076985 or [brendacordy370@gmail.com](mailto:brendacordy370@gmail.com)

If you require any further details or information, please contact the Church Wardens.  
Linda Hurst 01454 319183 and Brenda Cordy 07767 076985

## Parish Council news

### Funding from SGC

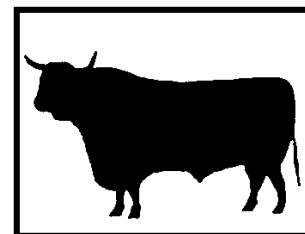
The Parish Council have been allotted a small amount of money from South Glos Council to go towards verge cutting, street cleaning etc, and have put forward areas where it is thought this could be usefully spent. They include several 'blind spots' around the village where visibility is poor from a motorist's perspective.

If you want to know more about Horton Parish Council, then please check out their websites :-

- <https://hortonparishcouncil.co.uk/>
- <https://beta.southglos.gov.uk/static/540adf2631e291767ecdc8db15767c3a/05-Horton-PC-following-amalgamation-of-Little-Sodbury-PM.pdf>

-o0o-o0o-o0o-o0o-o0o-o0o-o0o-o0o-o0o-

# HORTON AND LITTLE SODBURY VILLAGE NEWSLETTER



Edited by Horton and Little Sodbury Village Hall Committee  
Further information of events and news on [www.halsvh.org.uk](http://www.halsvh.org.uk)

## Useful Local Information

### Horton & Little Sodbury Village Hall

Web site: [www.halsvh.org.uk](http://www.halsvh.org.uk)  
Chair [chairman@halsvh.org.uk](mailto:chairman@halsvh.org.uk)  
Hall bookings [emma@halsvh.org.uk](mailto:emma@halsvh.org.uk) or on 01454 322879

## Quick Quiz

### Answers to last edition's quiz

- 1..In the famous Monty Python sketch, who or what is the "Norwegian Blue" Parrot
2. Can members of the House of Lords vote in a general election ? No
3. What do the following theme tunes have in common ...  
"Morse", "Mission Impossible" and "Some Mothers Do Ave Em" ? all use Morse Code  
*(the Ronnie Hazlehurst theme tune actually spells out "some mothers do ave em !!)*
4. Which animal can be seen on the Porsche logo ? Horse
5. What is the common name for the painting "Militia Company of District II under the Command of Captain Frans Banninck Cocq", painted by Rembrandt van Rijn ? The Night Watch

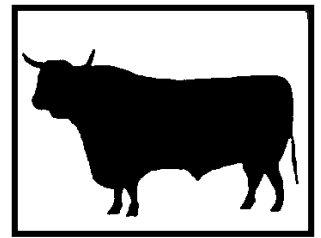
### Five quick summer related questions to test your knowledge ! Answers provided in next edition

1. What was the name of the ITV holiday show fronted by Judith Chalmers which ran from 1994 to 2003?
2. Which singer was known as the 'Queen of Disco'?
3. 'Swifter, Higher, Stronger' is the motto for the modern 'what'?
4. How many tons (yes, tons) of strawberries are consumed at Wimbledon each year  
(a) 18 tons, (b) 28 tons, (c) 38 tons ?
5. How long is the Grand Pier in Weston-Super-Mare ? (a) 266 metres, (b) 366 m, (c) 466 m ?

-o0o-o0o-o0o-o0o-o0o-o0o-o0o-o0o-o0o-

# HORTON AND LITTLE SODBURY VILLAGE NEWSLETTER

Edited by Horton and Little Sodbury Village Hall Committee  
Further information of events and news on [www.halsvh.org.uk](http://www.halsvh.org.uk)



## The Poster section

A promotional poster for the Horton Social Club 2024 Beer Festival. The text is arranged in a central, slightly curved layout. At the top, 'Horton Social Club' is in blue, and '2024 Beer Festival' is in red. Below this, 'live music' is written in blue on the left and 'Karaoke' in blue on the right, both curving around the central text. The central text reads 'SAVE the DATE' in a mix of blue and black fonts. Below that, 'Open All Weekend' and '16th - 18th August' are in yellow. At the bottom, 'Real Ales' is in green on the left and 'Guest Ciders' is in red on the right. Two white starburst graphics are positioned on either side of the top text.

Horton Social Club  
2024 Beer Festival

live music SAVE the DATE Karaoke

Open All Weekend  
16th - 18th August

Real Ales Guest Ciders

-o0o-o0o-o0o-o0o-o0o-o0o-o0o-o0o-o0o-