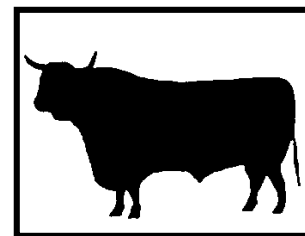


# HORTON AND LITTLE SODBURY VILLAGE NEWSLETTER

Edited by Horton and Little Sodbury Village Hall Committee  
Further information of events and news on [www.halsvh.org.uk](http://www.halsvh.org.uk)



June 2026

## Editorial

Welcome back!

I hope you've enjoyed the 'mini editions', but we're now back to the full newsletter, complete with all the pictures, stories, updates and quizzes.

Now, we really do need to talk about this weather. It has been so hot over the past few weeks and, in such circumstances, I'm reliably informed that it's important to keep your fluids up. I'll leave it entirely to you to decide what form those fluids might take 😊

So, what's been happening since the last full newsletter? Quite a few things, actually. The big news is that some of the potholes along Horton Hill have finally been filled in—and what a difference it's made. We've also had the Bull Run (more on that later).

Looking ahead, there is plenty happening in and around Horton over the next few months, and you'll find details of many of those events in this edition.

As always, if there's anything you'd like included in the next newsletter, or circulated via the village email network, please let us know ... whether it's news from the school, the church, the Social Club, local organisations, village groups, or any other community event, we'd love to hear from you. So please send your articles and comments to "[newsletter@halsvh.org.uk](mailto:newsletter@halsvh.org.uk)"

Thank you.

## Dates for the Diary

Here is a list of what will be happening in and around Horton & Little Sodbury in the next few months

Afternoon Teas @ St James' Church	starting 6 <sup>th</sup> June (from 12:30 till 4:30pm)
Horton & Little Sodbury Village Hall AGM @ HVH	Tue 23 <sup>rd</sup> June at 7:30pm
Feria Orchestra @ HVH	Sun 19th July (matinee performance)
Ninebarrow coming back to Horton	Sun 20th September at 2:30pm
Harvest Festival Service @ St James' Church	Sun 27th September
Board Game Afternoon @ HVH	rescheduled for November (date tba)
The Mysteries of Loch Ness – talk by Gareth Williams	Sun 6 <sup>th</sup> December (matinee)
A Christmas Get-together / Christmas Card launch	Sun 6 <sup>th</sup> December (evening)

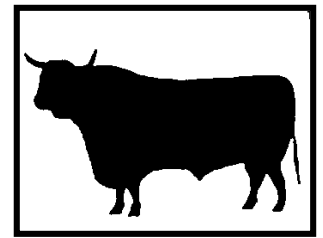
**Boxercise classes** are every Monday and Wednesday evenings from 6.30- 7.30pm at Village Hall.

**Pilates classes**— contact Sue Webb.

**Zumba classes** – contact Andrea Benson to express interest.

# HORTON AND LITTLE SODBURY VILLAGE NEWSLETTER

Edited by Horton and Little Sodbury Village Hall Committee  
Further information of events and news on [www.halsvh.org.uk](http://www.halsvh.org.uk)



## What's in the Diary in detail

### Horton & Little Sodbury Village Hall AGM

**Tue 23<sup>rd</sup> June @ Horton Village Hall**

A definite date for your diary. ☺

The Horton & Little Sodbury Village Hall AGM is being held on at 7:30pm on Tuesday 23<sup>rd</sup> June at the village hall. This provides a great opportunity to hear what has been achieved at the hall this year, and your chance to offer suggestions as to what can happen in the future. All welcome. See you there.

*(Ed – and don't worry – attendance doesn't mean that you are automatically co-opted onto the committee ☺.)*

### The return of the Feria Orchestra

**Sun 19<sup>th</sup> July @ Horton Village Hall**

OK ... so a few details still need to be sorted, but this is well worth knowing about and getting in your diary. On the afternoon of Sunday 19<sup>th</sup> July, the Feria Chamber Players will return to Horton Village Hall for another concert suitable for the whole family. After their fantastic Carnival of the Animals last summer, this time they will present a programme of popular classics, and especially music written for, and used on the Silver Screen. Highlight is Gershwin's spectacular Rhapsody in Blue, framed by music from Schindler's List, the Lord of the Rings and the "Gabriel's Oboe" theme from The Mission.

A concert not to be missed! Tickets: £15 and £7.50 for under 16s

More details available via "chairman@halsvh.org.uk".

### Ninebarrow returning to Horton

**Sun 20<sup>th</sup> September @ Horton Village Hall**

Good things come to those who don't mind an afternoon start!

We're thrilled that Ninebarrow will be returning to Horton Village Hall this September for a special matinee performance. Doors open at 1.30pm, with the music getting under way at 2.00pm.

Tickets are £18 in advance and £22 on the door (space permitting).

For tickets and further details, head to [www.ninebarrow.co.uk/horton](http://www.ninebarrow.co.uk/horton).

And yes, in case you're wondering, the bar will be open. It may be afternoon, but we're not barbarians !!

Tea and cakes will also be available for those who prefer their refreshments served with a cup and saucer.

*(Ed – last time Jon and Jay came here, it was an absolute sell out, and already 20 tickets have been sold ... so book your place now.)*



### Board Game Afternoon

**November @ Horton Village Hall**

This event is going to be re-scheduled for later in the year.

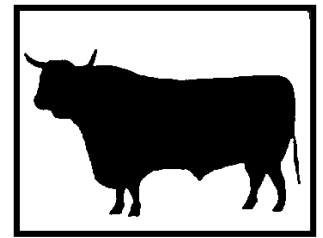
Basically, it was thought that on spring and summer afternoon, it was not right that we should be inside, so we are looking to organise this for the autumn / winter months, when we can all gather in the warm of the village hall, and play board games whilst drinking tea and eating cake.

So watch this space for further details.

*(Ed – I hope they have Guess Who? Then again, at my age, I spend half my time doing that anyway.!!)*



# HORTON AND LITTLE SODBURY VILLAGE NEWSLETTER



Edited by Horton and Little Sodbury Village Hall Committee  
Further information of events and news on [www.halsvh.org.uk](http://www.halsvh.org.uk)

## Events in December

Sunday 6<sup>th</sup> December @ Horton Village Hall

### The Mysteries of Loch Ness – talk by Gareth Williams

Some will remember that Gareth Williams came to Horton last year to give us an excellent talk about “The Impossible Bomb” and the Manhattan project. Well, we are delighted to welcome him back to Horton Village Hall to discuss “A Monstrous Commotion: The Mysteries of Loch Ness” - a creature that should have died out with the dinosaurs, or a legend built on hoaxes and wishful thinking?



More details to follow – what is known so far is that it will be a matinee performance. Watch this space.

### The Pre-Christmas Get-together

Also on Sunday 6<sup>th</sup> December, there will be a pre-Christmas get-together at Horton Village Hall.

Again, details need to be worked out, but the evening will start following Gareth’s talk.

There will be festive delights to sample and beverages available to purchase at the bar; and yes, there will a bit of a quiz as well.

And of course, there will be Christmas music playing in the background.

Also, that night, we will be launching the traditional Village Christmas e-Card, which, this year, will be supporting St Peter’s Hospice – a local charity that provides free adult hospice care for everyone that needs their support.



## What’s been happening

### Horton Spring Bull Run

On a glorious Sunday morning on the 26<sup>th</sup> April, over 150 people turned up to Village Hall for an enjoyable scenic 4 mile run through the Horton countryside. Yes, it was the Horton Bull Run, where the runners experienced the new “hybrid” course taking them along King Lane, Vinney Lane, Lower Woods, Wood Lane, back along King Lane and finishing at the hall.



The race was won by Matthew Cant in a remarkable time of 22mins 52 seconds ... setting the record for the new course. It really was an amazing day, with all runners and spectators really enjoying themselves. But the day was made all the more special by many of us staying around to watch Emma Barlow complete the London Marathon on the big screen.

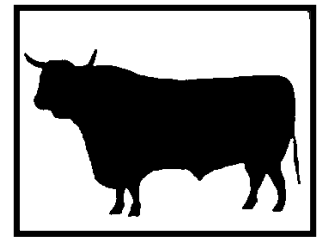
Many thanks to all the runners and supporters for turning up, and special thanks to all the volunteers who helped put the event together.

*(Ed – yes, it was a fantastic day, and many congratulations to Emma for completing the London Marathon and raising a huge amount of money for St Peter’s Hospice – well done !!)*



# HORTON AND LITTLE SODBURY VILLAGE NEWSLETTER

Edited by Horton and Little Sodbury Village Hall Committee  
Further information of events and news on [www.halsvh.org.uk](http://www.halsvh.org.uk)



## What's happening elsewhere

### Hawkesbury Upton Village Hall news and events

If you want to know more about that is happening in Hawkesbury Upton, then please check out their newsletter by contacting Colin Dixon on [colindixon365@btinternet.com](mailto:colindixon365@btinternet.com)

### Horton C.E. VA Primary School Update

Dean Hudd, Executive Head-teacher writes :

As I write this, I can hardly believe that I have now been part of the school community for nearly nine months. I would like to begin by saying how warmly Horton School has welcomed me since starting in September. From my very first days, it has been clear that this is a school with a strong heart — a place where children are known as individuals, where staff care deeply, and where the school is firmly rooted in the life of the village.

We are fortunate to have a team of committed and capable staff who know the children well and strive every day to provide the very best education and care. At the start of April, we said goodbye to Mrs Beth Nasce, who chose to pursue new ventures after three years at Horton. She is greatly missed, and we wish her every success for the future.

After the Easter holidays, we were delighted to welcome Mrs Faye Dare as our new Assistant Headteacher. Mrs Dare brings a wealth of experience, having previously worked at St John's Mead Primary School (part of our Federation), and she is already providing strong and supportive leadership within the school.

Across our federation, we continue to work closely together—sharing expertise, supporting one another, and learning collaboratively—while always protecting what makes Horton such a special and distinctive place. This approach enables us to be stronger together for the benefit of all our children.

Finally, I am mindful that our school sign at the front of the building does not currently reflect the vision and values we hold so dearly. With financial pressures as they are, replacing it is not straightforward. We would therefore be very grateful for any suggestions of local sponsorship or support to help us create a sign that truly reflects our school and its place within the community.

Thank you, as always, for your continued support.

Mr Dean Hudd  
Executive Headteacher  
Sodbury Vale Federation



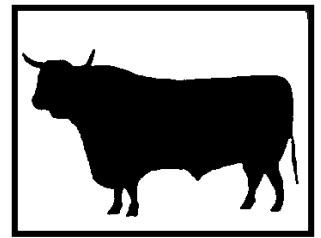
Horton CE VA Primary School  
01454 318834  
*Loving, learning and  
flourishing together*



St John's Mead CE VC Primary School  
01454 866501  
*Valuing Effort, Valuing Others, Valuing Self*

# HORTON AND LITTLE SODBURY VILLAGE NEWSLETTER

Edited by Horton and Little Sodbury Village Hall Committee  
Further information of events and news on [www.halsvh.org.uk](http://www.halsvh.org.uk)



## Church News

### **Update from St James' Church, Horton**

Martin May and the Church Team write :-

We had a wonderful service on Easter Sunday, good congregation, great choir (yes, I am in the choir) and some yummy refreshments.

Our regular organist has not played for a while - he has had a stay in hospital and now is recovering at home, but we were delighted that Tina's son in law (Ben Nicholas) volunteered (I think!) to play. Ben is the music director at Merton College Oxford, we were honoured he was able to join us.

Sunday 17th May saw the christening of Jessica Bateman. Jessica is the grand-daughter of Frances and Stuart Bateman who lived at Horton Court. We are pleased they chose St James for this special day.

As most of you know, the Churchyard is managed by South Glos Council. We have been unhappy as they have not followed the grass cutting schedule for over 12 months. A meeting was arranged back in early April when matters were discussed and a new plan agreed. This will mean that the whole Churchyard gets cut twice a year, with the main frontage cut every 6 weeks. We hope this will make it look much tidier whilst still encouraging the growth of some of the rarer plants.

We recently held our Annual Parochial Church Council meeting; you will find a copy of the accounts and minutes in the Church porch.

Our secretary, Richard Winsborrow stood down at the AGM following 12 years of sterling service. Our thanks to Richard for his support over the years.

This leaves a vacancy that we would like to fill, along with vacancies for new PCC members. Should you wish to discuss what these roles entail, please make contact with the vicar, Rev. Chris on 07985 708707 or email [rectorchris@svbcofe.org.uk](mailto:rectorchris@svbcofe.org.uk).

We are approaching our tea time at the Church, Saturdays from 12.30 - 4.30 starting 6th June, every Saturday with exception of 27th June and 1st August (well the girls do deserve a break!). We will then run through from 11th July to 1st August.

We will also be serving teas at the annual open days for Horton Court, this year 15th & 16th September. Remember its cash only please...thank you in anticipation.

The Church team.

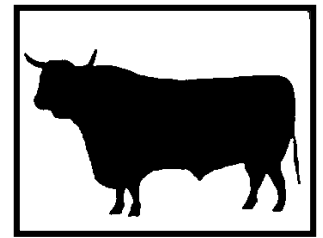
### **Update from St Adeline's Church**

Brenda Cordy & Linda Hurst write :-

- At our recent Annual Parochial Church Meeting Brenda Cordy and Linda Hurst were re-elected as Churchwardens for the coming year.
- Wotton Deanery are working on the Tyndale Trail, which celebrates 500 years since William Tyndale's translation of the New Testament into English.
- We are also awaiting a Surveyor's report on the continuing structural movement.
- We have agreed and awaiting the installation of a Defibrillator which will be positioned close to the perimeter wall of the church.
- The church is open during the day, but locked at night.

Church Wardens  
Brenda and Linda.

# HORTON AND LITTLE SODBURY VILLAGE NEWSLETTER



Edited by Horton and Little Sodbury Village Hall Committee  
Further information of events and news on [www.halsvh.org.uk](http://www.halsvh.org.uk)

## The Village Agent Update

Andy Hiscox, our Village Agent writes:

The winter is now well behind us and personally I am looking forward to the start of summer and hopefully some better weather for us all to enjoy. As a sufferer of hearing loss caused by the demands of my service with the British Army I thought about the challenges those of us face personally with such issues and where we can get help when required. You may also be worried about how your hearing loss impacts on your social, work and home life, which in my experience is always an ongoing concern.

If you are experiencing problems with your hearing or have been diagnosed with a hearing loss condition, there is support available from South Gloucestershire Council and its partnership agencies. You can contact the council to request an Occupational Therapy assessment which can provide information on equipment to manage your hearing loss such as amplified phones, pager systems or hearing loops. If you would like to arrange an assessment, contact the First Contact team on 01454 868007 or by email [csodesk@southglos.gov.uk](mailto:csodesk@southglos.gov.uk).

The council also have useful advice on their website about Assistive Technology that can support you in your home and allow you to remain independent.

If you do not have access to email, I can help you with this, or alternatively if you believe you need an Occupational Therapy Assessment, I can also signpost you to help. Transport may also be an issue, and again I may be able to assist.

The Village Agent Service can make a real difference to the rural communities they support by working with local residents and agencies. For more information on the Village Agent Service please visit [www.wern.org.uk/village-agents](http://www.wern.org.uk/village-agents)

Or Alternatively please contact myself on:

Mobile: 07795442272

Email: [andy@wern.org.uk](mailto:andy@wern.org.uk)



## Community Engagement Officer update

Hazel Everett, Community Engagement Officer – Area 2 Yate and Cotswold Edge writes:

Good morning,

We are trialling something different for the summer Your Voice meetings

We are linking in with existing community events to try and go out to where residents are.

Have your say about issues in the community.

The Your Voice team for Yate and Cotswold Edge, and partners like the police and health providers, will be at Yate Rocks at Kingsgate Park, Yate on Saturday 27 June (11am-4pm).

Everyone is welcome to ask questions about council and partner services and raise any matters in the local area.

Sign up for reminders and updates: [www.southglos.gov.uk/your-voice](http://www.southglos.gov.uk/your-voice)

To sign up to email reminders and future updates about Your Voice meetings and agenda items, visit: [www.southglos.gov.uk/your-voice](http://www.southglos.gov.uk/your-voice)

Feedback is also welcome: <https://online1.snapsurveys.com/yourvoicefeedback>



Thank you for your support and we look forward to seeing you at future events.

Kind Regards

Hazel Everett

Community Engagement Officer – Area 2 Yate and Cotswold Edge

Department For Resources, Strategy, Engagement and Change Division

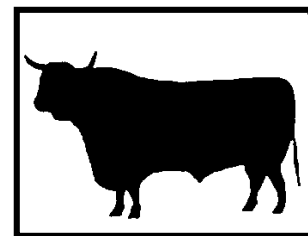
PO Box 153

T: 01454 865865 Helpline: Mon-Fri, 9am – 4pm

E: [grants@southglos.gov.uk](mailto:grants@southglos.gov.uk)

# HORTON AND LITTLE SODBURY VILLAGE NEWSLETTER

Edited by Horton and Little Sodbury Village Hall Committee  
Further information of events and news on [www.halsvh.org.uk](http://www.halsvh.org.uk)



## Want to hire out the hall ??

Are you looking for an event venue for 2026, then look no further than Horton and Little Sodbury Village Hall. Our village hall is perfect for birthday parties, wedding receptions, craft fairs, musical evenings, business meetings, off-site away-days, or team building event. Our rates are very competitive and you can host whatever kind of event suits your social or business needs.



We have free high speed wireless internet and a screen for you to project slides or other presentations. The hall seats up to about 100 people theatre style, and about 60 cabaret style.

Outside we have space for a hog roast or a barbecue. Our well fitted kitchen means that food can be cooked on site if you wish. We have a plumbed in water boiler to provide copious cups of tea or coffee.



Tables, chairs, use of the kitchen, crockery, cutlery, glasses, teapots and cafetieres are included in the hire charge. And we have a bar area. No hidden extras.

Outside we have a patio, a large car park and also a large playing field where you could have teambuilding events. We are within easy reach of Bristol, Bath, Yate,

Stroud and the M4 and M5 motorways.

Check out our web site <http://www.halsvh.org.uk/>

or contact Emma on [emma@halsvh.org.uk](mailto:emma@halsvh.org.uk) or 07766 524591 for further information and to arrange a visit.



-o0o-o0o-o0o-o0o-o0o-o0o-o0o-o0o-o0o-

## Useful Local Information

### Horton & Little Sodbury Village Hall

Web site: [www.halsvh.org.uk](http://www.halsvh.org.uk)  
Chair: [chairman@halsvh.org.uk](mailto:chairman@halsvh.org.uk)  
Hall bookings: [emma@halsvh.org.uk](mailto:emma@halsvh.org.uk) or on 07766 524591

### Village Agent

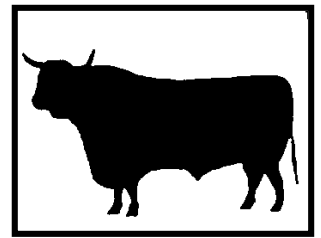
Andy Hiscox: [andy@wern.org.uk](mailto:andy@wern.org.uk) or on 07795 442272

### Horton Parish Council

<https://hortonparishcouncil.co.uk/>

# HORTON AND LITTLE SODBURY VILLAGE NEWSLETTER

Edited by Horton and Little Sodbury Village Hall Committee  
Further information of events and news on [www.halsvh.org.uk](http://www.halsvh.org.uk)



## Quick Quiz

### Answers to last edition's quiz

- 1.. Which retail company was formed in 1969 by David Quayle and Richard Block? **B&Q**
2. By which four letter initials is the UK organisation based at "The Doughnut" commonly known? **GCHQ**
3. The wader also called a "sea pie" has a more common, and inaccurate, name? **Oystercatcher**
4. Just a Minute panellists aim to avoid hesitation, repetition and what other offence? **Deviation**
5. Which mariner is the titular protagonist of a famous work published in 1719, considered to be the first English novel?? **Robinson Crusoe**

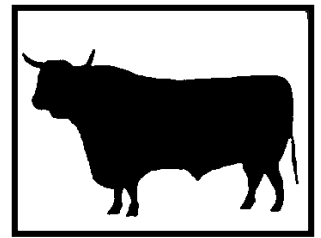
### Five quick questions to test your general knowledge ! Answers provided in next edition

1. Dara won the Eurovision Song Contest last month with her dance anthem Bangaranga, but what country did she represent ?
2. The new hosts of Strictly Come Dancing were announced recently, two of whom being Emma Willis and Johannes Radebe, but what is the name of the comedian who will also co-host with them ?
3. Which two football teams were involved in the recent "Spygate Scandal" ?
4. Which child in *The Lion, The Witch and The Wardrobe* is the first to discover Narnia?
5. The text of what occupational document begins "I swear by Apollo the physician ..."?

-o0o-o0o-o0o-o0o-o0o-o0o-o0o-o0o-o0o-

# HORTON AND LITTLE SODBURY VILLAGE NEWSLETTER

Edited by Horton and Little Sodbury Village Hall Committee  
 Further information of events and news on [www.halsvh.org.uk](http://www.halsvh.org.uk)



## The Poster section

**Get involved in what matters to you**

**Come and talk to us at**

**Kingsgate Park (Yate Rocks)**

**Saturday 27 June 11am – 4pm**

**Drop into our World Café marquee to chat about your local area. Meet council officers, share your views, ask questions, and discuss topics which matter to you.**

**There will also be a variety of stalls about different council and partner services.**

**We are attending summer events instead of holding meetings so we can reach more people and make it easier for residents to speak to us. Regular Your Voice meetings will resume in the autumn.**

[southglos.gov.uk/your-voice](http://southglos.gov.uk/your-voice)